

Data Sheet

Customer:

Product: Automotive Grade Multilayer Chip Beads – CBM..A Series

Sizes.: 0402/0603/0805/1204/1210/1808/1812

Issued Date: 25-Aug-22

Edition: REV.A1



VIKING TECH CORPORATION
光頡科技股份有限公司
No.70, Guangfu N. Rd., Hukou
Township, Hsinchu County
303, Taiwan (R.O.C)

TEL:886-3-5972931
FAX:886-3-5972935•886-3-5973494
E-mail:sales@viking.com.tw

VIKING TECH CORPORATION KAOHSIUNG BRANCH
光頡科技股份有限公司高雄分公司
No.248-3, Sin-Sheng Rd., Cian-Jhen Dist., Kaohsiung,
806, Taiwan

TEL:886-7-8217999
FAX:886-7-8228229
E-mail:sales@viking.com.tw

VIKING ELECTRONICS (WUXI) CO., LTD.
光頡電子(無錫)有限公司
No.22 Xixia Road, Machinery & Industry Park,
National Hi-Tech Industrial Development Zone
of Wuxi, Wuxi, Jiangsu Province, China
Zip Code :214028
TEL :86-510-85203339
FAX :86-510-85203667•86-510-85203977
E-mail :china@viking.com.tw

Produced by (QC)	Checked (QC)	Approved by (QC)	Prepared by (Sales)	Accepted by (Customer)
25-Aug-22	25-Aug-22	25-Aug-22		
<i>Mandy Chen</i>	<i>Ben Chang</i>	<i>Ben Chang</i>		

Automotive Grade Multilayer Chip Beads

■ Features

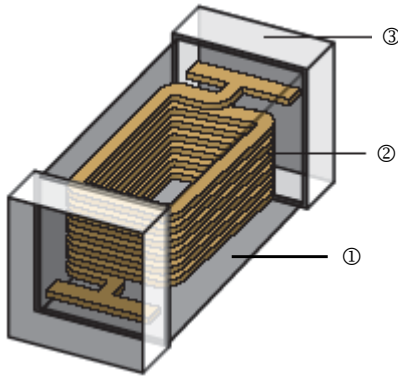
- Effective EMI protection
- Low DC resistance
- High soldering heat resistance
- Multiple size availability
- AEC-Q200 Compliance



■ Applications

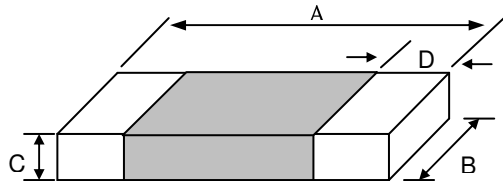
- Computers and Peripheral Equipment
- VCRS, Television, Pagers
- Cellular Phones
- Digital Communication Equipment
- Various Electronics Equipments
- Circuit Where a Stable Ground is Unavailable

■ Construction



① Ferrite	② Internal Electrode	③ Electrode Plating
-----------	----------------------	---------------------

■ Dimensions



Type	Size (Inch)	A (mm)	B (mm)	C (mm)	D (mm)	Weight (g) (1000pcs)
CBM02	0402	1.0±0.10	0.50±0.10	0.5±0.10	0.25±0.10	2.6
CBM03	0603	1.6±0.15	0.80±0.15	0.6±0.15	0.30±0.20	5
		1.6±0.15	0.80±0.15	0.8±0.15	0.30±0.20	6.2
CBM05	0805	2.0±0.20	1.25±0.20	0.9±0.20	0.50±0.30	10
CBM04	1204	3.2±0.20	1.60±0.20	1.1±0.20	0.50±0.30	30
CBM10	1210	3.2±0.20	2.50±0.20	1.3±0.20	0.50±0.30	54
CBM08	1808	4.5±0.25	1.60±0.20	1.6±0.20	0.60±0.40	60
CBM12	1812	4.5±0.25	3.20±0.25	1.5±0.25	0.60±0.40	100.43

Automotive Grade Multilayer Chip Beads

Part Numbering

CBM	03	Y	T	-	N	601	A
Product Type	Dimensions	Impedance Tolerance	Packaging Code	Material Code	Current	Impedance	Function Code
	02: 0402 03: 0603 05: 0805 04: 1204 10: 1210 08: 1808 12: 1812	Y: ±25% 7: ±5%	T: Taping Reel	- : No material B: B material H: H material S: S material P: P material	H: High current N: General current	700: 70Ω 121: 120Ω 102: 1000Ω	A: Automotive Grade

Standard Electrical Specifications(for General Signal Line Use)

CBM02(100505) / No material

Part No.	Impedance (Ω)	Tolerance	Test Freq. (MHz)	DCR (Ω) max.	Rated Current (mA) max.
CBM02YT-N700A	70	±25%	100	0.15	600
CBM02YT-N121A	120	±25%	100	0.25	500
CBM02YT-N241A	240	±25%	100	0.35	300
CBM02YT-N102A	1000	±25%	100	1.00	200

CBM02(100505) / B material

Part No.	Impedance (Ω)	Tolerance	Test Freq. (MHz)	DCR (Ω) max.	Rated Current (mA) max.
CBM02YTBN601A	600	±25%	100	0.65	200
CBM02YTBN102A	1000	±25%	100	0.90	200
CBM02YTBN182A	1800	±25%	100	1.40	200

CBM03(160808) / No material

Part No.	Impedance (Ω)	Tolerance	Test Frequency (MHz)	DCR (Ω) max.	Rated Current (mA) max.
CBM03YT-N800A	80	±25%	100	0.10	600
CBM03YT-N121A	120	±25%	100	0.18	500
CBM03YT-N221A	220	±25%	100	0.25	500
CBM03YT-N471A	470	±25%	100	0.35	500
CBM03YT-N601A	600	±25%	100	0.38	500
CBM03YT-N102A	1000	±25%	100	0.50	400
CBM03YT-N182A	1800	±25%	100	1.50	50
CBM03YT-N222A	2200	±25%	100	1.50	50
CBM03YT-N252A	2500	±25%	100	1.50	50

CBM05(201209) / No material

Part No.	Impedance (Ω)	Tolerance	Test Frequency (MHz)	DCR (Ω) max.	Rated Current (mA) max.
CBM05YT-N121A	120	±25%	100	0.15	200
CBM05YT-N151A	150	±25%	100	0.15	200
CBM05YT-N221A	220	±25%	100	0.20	200
CBM05YT-N601A	600	±25%	100	0.30	200
CBM05YT-N102A	1000	±25%	100	0.45	200

CBM04(321611) / No material

Part No.	Impedance (Ω)	Tolerance	Test Frequency (MHz)	DCR (Ω) max.	Rated current (mA) max.
CBM04YT-N601A	600	±25%	100	0.90	200

■We are capable to design according to customer special requirement

Automotive Grade Multilayer Chip Beads**■Standard Electrical Specifications(for High Speed Signal Line Use)**

CBM02(100505) / H material

Part No.	Impedance (Ω)	Tolerance	Test Freq. (MHz)	DCR (Ω) max.	Rated Current (mA) max.
CBM02YTHN750A	75	±25%	100	0.40	300
CBM02YTHN121A	120	±25%	100	0.55	300
CBM02YTHN221A	220	±25%	100	0.60	200

CBM03(160808) / H material

Part No.	Impedance (Ω)	Tolerance	Test Frequency (MHz)	DCR (Ω) max.	Rated Current (mA) max.
CBM03YTHN200A	20	±25%	100	0.20	700
CBM03YTHN750A	75	±25%	100	0.30	500
CBM03YTHN121A	120	±25%	100	0.40	200
CBM03YTHN241A	240	±25%	100	0.45	200
CBM03YTHN601A	600	±25%	100	0.65	200
CBM03YTHN102A	1000	±25%	100	0.85	100

CBM05(201209) / H material

Part No.	Impedance (Ω)	Tolerance	Test Frequency (MHz)	DCR (Ω) max.	Rated Current (mA) max.
CBM05YTHN121A	120	±25%	100	0.25	200
CBM05YTHN151A	150	±25%	100	0.25	200
CBM05YTHN221A	220	±25%	100	0.25	200
CBM05YTHN601A	600	±25%	100	0.35	200
CBM05YTHN222A	2200	±25%	100	0.60	200

■We are capable to design according to customer special requirement

Automotive Grade Multilayer Chip Beads

■ Standard Electrical Specifications(For High Current Line Use)

CBM02(100505) / No material

Part No.	Impedance (Ω)	Tolerance	Test Freq. (MHz)	DCR (Ω) max.	Rated Current (mA) max.
CBM02YT-H100A	10	±25%	100	0.050	1000
CBM02YT-H121A	120	±25%	100	0.090	1500

CBM02(100505) / S material

Part No.	Impedance (Ω)	Tolerance	Test Freq. (MHz)	DCR (Ω) max.	Rated Current (mA)	
					85℃	125℃
CBM02YTSH100A	10	±5Ω	100	0.050	1000	1000
CBM02YTSH100A-1	10	±5Ω	100	0.045	2000	1000
CBM02YTSH600A	60	±25%	100	0.060	2500	1100
CBM02YTSH121A	120	±25%	100	0.090	1500	1000

CBM03(160808) / No material

Part No.	Impedance (Ω)	Tolerance	Test Frequency (MHz)	DCR (Ω) max.	Rated Current (mA) max.
CBM03YT-H300A	30	±25%	100	0.050	1000
CBM03YT-H600A	60	±25%	100	0.100	1000
CBM03YT-H121A	120	±25%	100	0.050	2000
CBM03YT-H181A	180	±25%	100	0.090	2000
CBM03YT-H221A	220	±25%	100	0.100	1500
CBM03YT-H301A	300	±25%	100	0.150	1500
CBM03YT-H471A	470	±25%	100	0.200	1000
CBM03YT-H601A	600	±25%	100	0.200	1000

CBM03(160808) / S material

Part No.	Impedance (Ω)	Tolerance	Test Frequency (MHz)	DCR (Ω) max.	Rated Current (mA)	
					85℃	125℃
CBM03YTSH300A	30	±25%	100	0.025	3000	1000
CBM03YTSH330A	33	±25%	100	0.025	3000	1000
CBM03YTSH600A	60	±25%	100	0.100	1000	1000
CBM03YTSH121A	120	±25%	100	0.050	2000	1000
CBM03YTSH181A	180	±25%	100	0.090	1500	1000
CBM03YTSH221A	220	±25%	100	0.100	1500	1000
CBM03YTSH331A	330	±25%	100	0.150	1500	1000
CBM03YTSH471A	470	±25%	100	0.200	1000	1000
CBM03YTSH601A	600	±25%	100	0.200	1000	1000
CBM03YTSH102A	1000	±25%	100	0.250	800	800

CBM03(160806) / P material

Part No.	Impedance (Ω)	Tolerance	Test Frequency (MHz)	DCR (Ω) max.	Rated Current (mA)	
					85℃	125℃
CBM03YTPH260A	26	±25%	100	0.007	6000	4000
CBM03YTPH300A	30	±25%	100	0.010	5000	3300
CBM03YTPH700A	70	±25%	100	0.022	3500	2200
CBM03YTPH101A	100	±25%	100	0.030	3000	1900
CBM03YTPH121A	120	±25%	100	0.030	3000	1900

CBM03(160808) / P material

Part No.	Impedance (Ω)	Tolerance	Test Frequency (MHz)	DCR (Ω) max.	Rated Current (mA)	
					85℃	125℃
CBM03YTPH221A	220	±25%	100	0.050	2200	1500
CBM03YTPH331A	330	±25%	100	0.080	1700	1200
CBM03YTPH471A	470	±25%	100	0.130	1500	1000
CBM03YTPH601A	600	±25%	100	0.150	1300	1000

■ We are capable to design according to customer special requirement

Automotive Grade Multilayer Chip Beads

CBM05(201209) / No material

Part No.	Impedance (Ω)	Tolerance	Test Frequency (MHz)	DCR (Ω) max.	Rated current (mA) max.
CBM05YT-H310A	31	±25%	100	0.015	3000
CBM05YT-H600A	60	±25%	100	0.026	3000
CBM05YT-H121A	120	±25%	100	0.040	3000
CBM05YT-H221A	220	±25%	100	0.050	2000
CBM05YT-H331A	330	±25%	100	0.090	1500
CBM05YT-H601A	600	±25%	100	0.090	2000
CBM05YT-H152A	1500	±25%	100	0.300	1000

CBM05(201209) / S material

Part No.	Impedance (Ω)	Tolerance	Test Freq. (MHz)	DCR (Ω) max.	Rated Current (mA)	
					85°C	125°C
CBM05YTSH300A	30	±25%	100	0.014	4000	3300
CBM05YTSH600A	60	±25%	100	0.020	4000	2300
CBM05YTSH800A	80	±25%	100	0.020	4000	2300
CBM05YTSH101A	100	±25%	100	0.020	4000	2300
CBM05YTSH121A	120	±25%	100	0.040	3000	1550
CBM05YTSH181A	180	±25%	100	0.020	4000	2300
CBM05YTSH221A	220	±25%	100	0.045	2000	1250
CBM05YTSH331A	330	±25%	100	0.070	1500	1000
CBM05YTSH331A-1	330	±25%	100	0.060	2000	1000
CBM05YTSH601A	600	±25%	100	0.090	2000	1000
CBM05YTSH102A	1000	±25%	100	0.200	1500	1000
CBM05YTSH152A	1500	±25%	100	0.300	1000	1000

CBM04(321611) / No material

Part No.	Impedance (Ω)	Tolerance	Test Frequency (MHz)	DCR (Ω) max.	Rated current (mA) max.
CBM04YT-H500A	50	±25%	100	0.025	3000
CBM04YT-H121A	120	±25%	100	0.025	3000
CBM04YT-H601A	600	±25%	100	0.090	1500

CBM04(321611) / S material

Part No.	Impedance (Ω)	Tolerance	Test Freq. (MHz)	DCR (Ω) max.	Rated Current (mA)	
					85°C	125°C
CBM04YTSH500A	50	±25%	100	0.015	3500	2300
CBM04YTSH121A	120	±25%	100	0.020	3000	2000
CBM04YTSH391A	390	±25%	100	0.075	2000	1250
CBM04YTSH601A	600	±25%	100	0.080	1500	1000

CBM10(322513) / No material

Part No.	Impedance (Ω)	Tolerance	Test Frequency (MHz)	DCR (Ω) max.	Rated current (mA) max.
CBM10YT-H102A	1000	±25%	100	0.090	2000

CBM10(322513) / S material

Part No.	Impedance (Ω)	Tolerance	Test Freq. (MHz)	DCR (Ω) max.	Rated Current (mA)	
					85°C	125°C
CBM10YTSH102A	1000	±25%	50	0.090	2000	1000

CBM08(451616) / No material

Part No.	Impedance (Ω)	Tolerance	Test Frequency (MHz)	DCR (Ω) max.	Rated current (mA) max.
CBM08YT-H600A	60	±25%	100	0.010	6000
CBM08YT-H181A	180	±25%	100	0.020	3500
CBM08YT-H102A	1000	±25%	100	0.090	1500

■ We are capable to design according to customer special requirement

Automotive Grade Multilayer Chip Beads

CBM08(451616) / S material

Part No.	Impedance (Ω)	Tolerance	Test Freq. (MHz)	DCR (Ω) max.	Rated Current (mA)	
					85°C	125°C
CBM08YTSH600A	60	±25%	100	0.010	6000	3700
CBM08YTSH181A	180	±25%	100	0.020	3500	2100
CBM08YTSH102A	1000	±25%	100	0.150	1500	1000

CBM12(453215) / S material

Part No.	Impedance (Ω)	Tolerance	Test Freq. (MHz)	DCR (Ω) max.	Rated Current (mA)	
					85°C	125°C
CBM12YTSH681A	680	±25%	100	0.028	4000	3000

■We are capable to design according to customer special requirement

■Environmental Characteristics

Electrical Performance Test

Item	Specification	Test Methods
Impedance	Refer to standard electrical spec.	Agilent E4991A/B RF Impedance material analyzer or equivalent
DCR		Agilent 4338B mili-ohm meter

Mechanical Performance Test

Item	Specification	Test Methods												
High Temperature Exposure	No mechanical damage Impedance value should be within ± 30 % of the initial value	Temperature : 125°C ± 5°C Test time : 1000 hrs Measurement: at ambient temperature 24 hrs after test completion												
Temperature Cycle	No mechanical damage Impedance value should be within ± 30 % of the initial value	Temperature : -55 ~ +125°C Cycle : 1000 cycles Dwell time : 30minutes Measurement: at ambient temperature 24 hrs after test completion												
Biased Humidity	No mechanical damage Impedance value should be within ± 30 % of the initial value	Temperature : 85°C ± 2°C Humidity : 85 % RH Test time : 1000 hrs Apply current : full rated current Measurement: at ambient temperature 24 hrs after test completion												
Operational Life	No mechanical damage Impedance value should be within ± 30 % of the initial value	Temperature : 85°C ± 5°C (Operating temperature should be 125 °C if the rated current of parts not exceed 1A) Test time : 1000 hrs Apply current : full rated current Measurement: at ambient temperature 24 hrs after test completion												
Mechanical Shock	No mechanical damage Impedance value should be within ± 30 % of the initial value	Condition F:1500g's/0.5ms/Half sine												
Vibration Test	No mechanical damage Impedance value should be within ± 30 % of the initial value	5g's for 20 minutes,12cycles each of 3 orientations Test from 10-2000Hz.,12cycles each of 3 orientations												
Resistance to Solder Heat	More than 95 % of terminal electrode should be covered with new solder No mechanical damage Impedance value should be within ± 30 % of the initial value	Solder temperature : 260 ± 5°C Flux : Rosin DIP time : 10 ± 1 sec												
ESD	No mechanical damage Impedance value should be within ± 30 % of the initial value	Classification Levels 1C 1000 V (DC) to < 2000 V (DC)												
Solderability Test	More than 95 % of terminal electrode should be covered with new solder No mechanical damage	Solder temperature : 235 ± 5°C Flux : Rosin DIP time : 5 ± 1 sec												
Board Flex	No mechanical damage.	Epoxy-PCB(1.6mm) Deflection 2mm(min) 60s minimum holding time												
Terminal Strength	No mechanical damage	<table border="1"> <thead> <tr> <th>Size</th> <th>Apply Force(F)</th> <th>Test Time</th> </tr> </thead> <tbody> <tr> <td>0402</td> <td>5N</td> <td>10±1 sec</td> </tr> <tr> <td>0603</td> <td>10N</td> <td>10±1 sec</td> </tr> <tr> <td>≥0805</td> <td>17.7N</td> <td>60±1 sec</td> </tr> </tbody> </table>	Size	Apply Force(F)	Test Time	0402	5N	10±1 sec	0603	10N	10±1 sec	≥0805	17.7N	60±1 sec
Size	Apply Force(F)	Test Time												
0402	5N	10±1 sec												
0603	10N	10±1 sec												
≥0805	17.7N	60±1 sec												

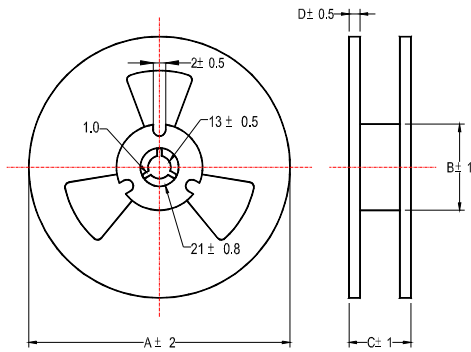
■Operating Temperature: -55°C ~ 125°C

■Storage Temperature: < 40°C ; Humidity : < 70%RH

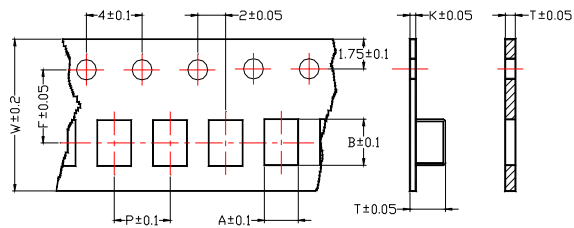
Automotive Grade Multilayer Chip Beads

■Packaging

Reel Specifications

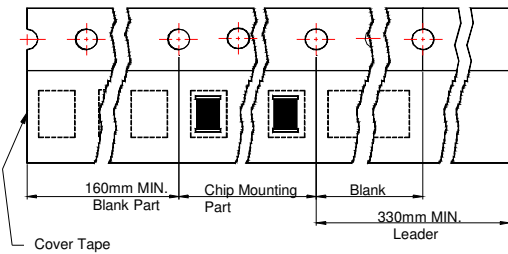


Tape Specifications

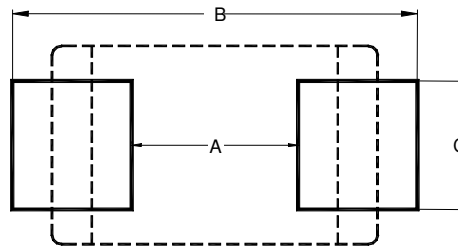


Type A **Type B**

Tape Material



Recommended Pattern



Unit : mm

Type	Tape Dimensions								Reel Dimensions				Recommended Pattern			Quantity (EA)
	A	B	T	W	P	F	K	Tape Type	A	B	C	D	A	B	C	
CBM02	0.62	1.12	0.60	8.0	2.0	3.5	-	B	178	60	10	2	0.4	1.2-1.4	0.5	10000
CBM03	0.97	1.80	0.75	8.0	4.0	3.5	-	B	178	50 or more	10	-	0.7	1.8~2.0	0.7	4000
	1.05	1.85	0.95	8.0	4.0	3.5	-	B	178	60	10	2	0.7	1.8-2.0	0.7	4000
CBM05	1.50	2.30	0.95	8.0	4.0	3.5	-	B	178	60	10	2	1.2	3.0-4.0	1.0	4000
CBM04	1.85	3.43	1.22	8.0	4.0	3.5	0.25	A	178	60	10	2	2.0	4.2-5.2	1.2	3000
CBM10	2.57	3.40	1.32	8.0	4.0	3.5	0.25	A	178	60	10	2	2.0	4.2-5.2	3.4	2000
CBM08	1.83	4.85	1.83	12.0	4.0	5.5	0.29	A	178	60	10	2	3.0	5.5-6.5	1.2	2000
CBM12	3.66	4.95	1.83	12.0	8.0	5.5	0.23	A	178	50 or more	10	-	3.0	5.5~6.5	4.22	1000

■Soldering Condition

